

TL70



## Modular Tower Light

The Choice is Yours: You choose how to order and build the TL70 with the flexibility to customize the tower light as needed and change positions in the field.

- **Big and bright** 70 mm tower lights have two banks of LEDs
- **Rugged**, water-resistant **IP65** housing with UV stabilized material
- **Customize** lights for your application by selecting solid ON or flashing for each light segment
- Up to five individual colors, plus audible (92 dB or 101 dB) in one device or choose a multicolored segment with **up to three colors in one segment**
- Bright, uniform indicator segments appear gray when off to **eliminate false indication** from ambient light





TL70 Modular Tower Light

# A Better Design by Banner

The TL70 tower light is Banner's latest achievement in rethinking and designing a better indicator.



Brighter lights—  
two banks of LEDs

IP65 housing for  
industrial use

Light segments can be  
configured solid ON or flashing

Stack up to six modules, with five  
color choices (red, green, yellow, white  
and blue), plus one audible per device

Multicolor segment allows for up  
to three colors in one segment

Loud (92 dB) or louder  
(101dB) adjustable alarm with  
four selectable tones—pulsed,  
chirp, siren or continuous

Match your machine  
with a choice of black  
or gray housing



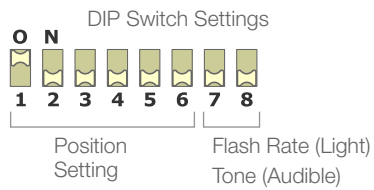
TL70 Modular Tower Light

# The Easiest Tower Light to Install

The TL70 tower light design is user friendly with just a few easy steps to complete installation.

## 1. Module Settings

- Assign module position (switches 1-6)
- Assign flash rate or audible tone (switches 7-8)



## 2. Assemble

- Align segment markings
- Press together
- Twist to lock

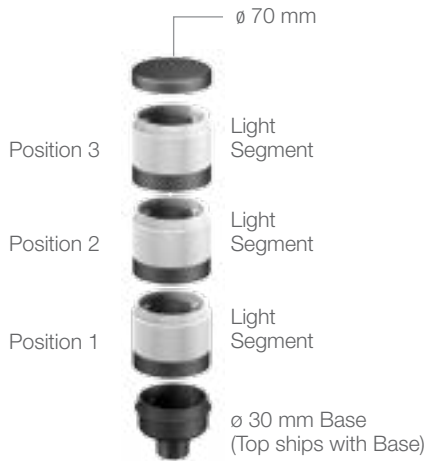
## 3. Apply Power

- M12 QD
- Flying lead cable
- Terminals

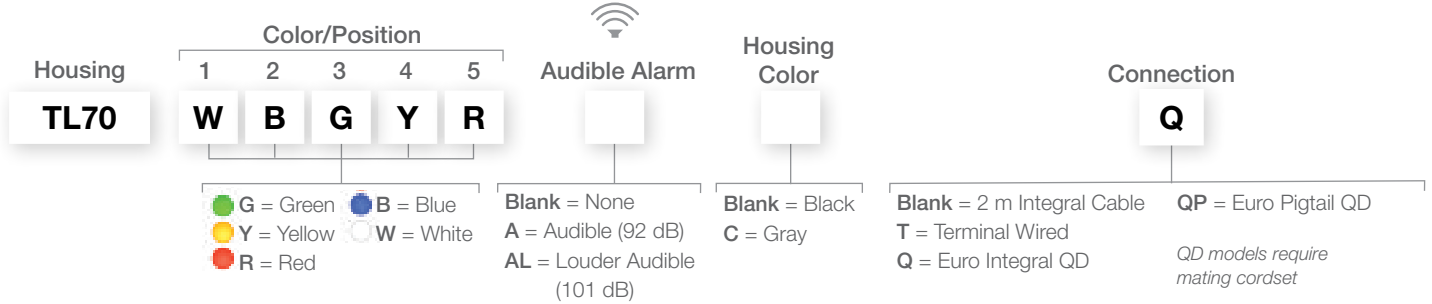




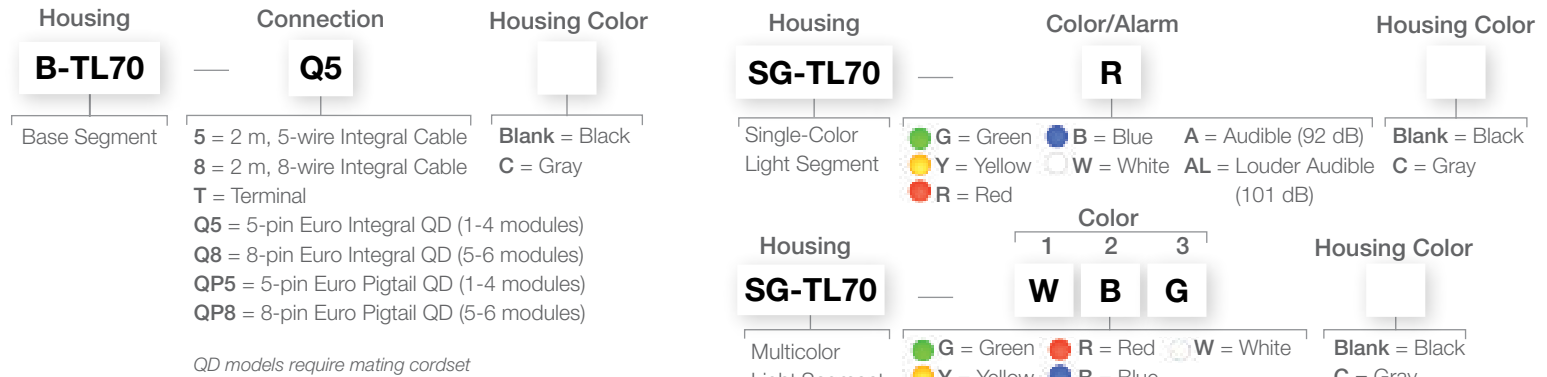
TL70 Modular Tower Light



Order Preassembled

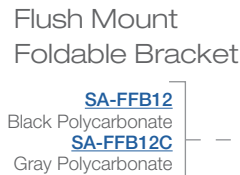


Order Components to Build your Own



Order Now

Accessories



Elevated Mount System

- SA-M30**  
Black polycarbonate adapter/cover
- SA-M30C**  
Gray polycarbonate adapter/cover
- SOP-E12-150A (150 mm)**  
**SOP-E12-300A (300 mm)**  
**SOP-E12-900A (900 mm)**  
Black anodized aluminum pipe
- SOP-E12-150AC (150 mm)**  
**SOP-E12-300AC (300 mm)**  
**SOP-E12-900AC (900 mm)**  
Clear anodized aluminum pipe
- SOP-E12-150SS (150 mm)**  
**SOP-E12-300SS (300 mm)**  
**SOP-E12-900SS (900 mm)**  
304 stainless steel pipe



- 5-Pin M12/ Euro-Style Cordsets\***  
Straight connector models listed
- MQDC1-506**  
2 m (6.5')
- MQDC1-515**  
5 m (15')
- MQDC1-530**  
9 m (30')
- 8-Pin M12/ Euro-Style Cordsets\***  
Straight connector models listed.
- MQDC2S-806**  
2 m (6.5')
- MQDC2S-815**  
5 m (15')
- MQDC2S-830**  
9 m (30')

\* For right-angle models add RA to the end of model number (example, [MQDC1-506RA](#))


Supply Voltage	12 to 30 V dc
Construction	Bases, Covers and Light Segments: Polycarbonate
Environmental Rating	IP65
Operating Temperature	-40 to +50 °C (-40 to +122 °F)
Certifications	



# TL70 Modular Tower Light

[Link to data sheets](#)

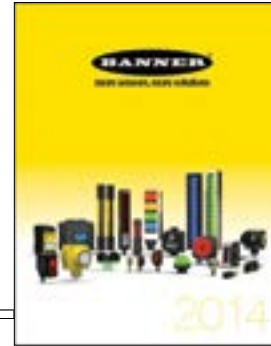
**WLC90 Heavy Duty LED Light**



Banner's WLC90 Heavy Duty LED Light is designed to operate in harsh environments and withstand harsh weather conditions. These are compact and rugged, making them an excellent choice for machine operators and food processing plants.

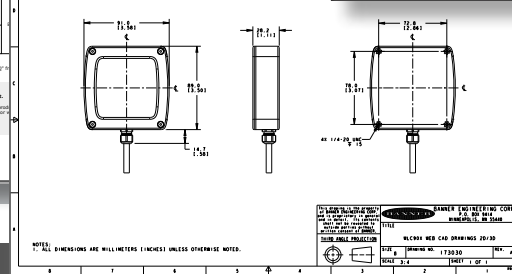
- High contrast, wide-angle reflector with 180° beam, and 180° range
- Wide operating temperature range with an optional mounting bracket that fits the LED in a 180° beam of extreme temperatures
- Three beam choices to suit your application needs
- Six and six brackets for versatile mounting to direct the light in any direction
- Models have three discrete intensity level settings

Model	Beam Angle	Connection	Window
WLC90WLED	8° Beam	Integral 4-Pin Euro QD Side Exit	None
WLC90WLED	15° Beam		
WLC90WLED	30° Beam		
WLC90BLED	8° Beam	Integral 4-Pin Euro QD Rear Exit	None
WLC90BLED	15° Beam		
WLC90BLED	30° Beam		
WLC90WLED	8° Beam	Integral 4-Pin Euro QD Side Exit	None
WLC90WLED	15° Beam		
WLC90WLED	30° Beam		
WLC90WLED	8° Beam	Integral 4-Pin Euro QD Rear Exit	None
WLC90WLED	15° Beam		
WLC90WLED	30° Beam		



[Link to catalog](#)

[Link to the Banner website](#)



[Link to CAD files](#)



Talk with an app engineer. Get product specs. Order now.

1-888-373-6767 • bannerengineering.com

Minneapolis, MN