

Q3X



Versatile, Rugged Laser Contrast Sensor

High-Speed Performance: Captures up to 2,000 events per second.

Versatile

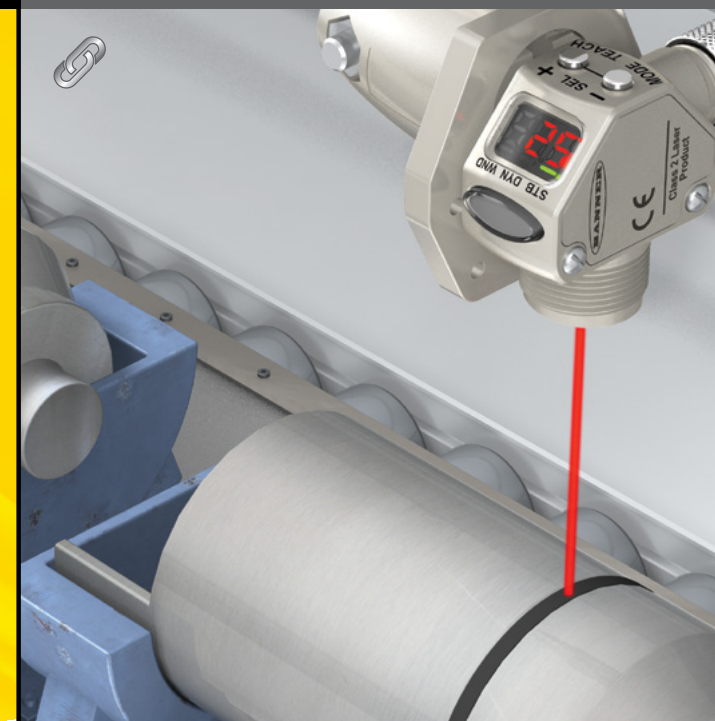
Solves challenging part-detection applications with small contrast differences.

Durable

Rugged nickel-plated zinc housing suitable even in environments with cutting fluids and oils.

Easy to Use

Simplified user experience with a **clear intensity readout** from the angled three-digit display and easy setup with responsive buttons.

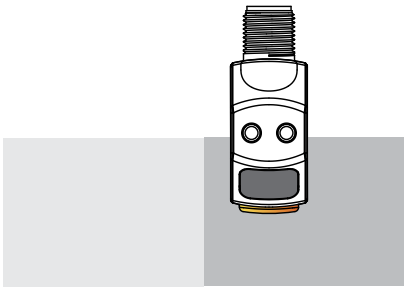




Q3X Laser
Contrast Sensor

High-Speed Detection

- High-speed part detection as fast as 250 μ s, capturing up to 2,000 events per second
- Used for presence/absence or orientation detection



Can detect small changes in contrast
up to 300 mm



- Angled Three-Digit Display
- Clear user feedback facilitates setup
 - Easy to read at all angles
 - Optional inverted display for easy mounting and readability
 - Clear intensity readout





Q3X Laser
Contrast Sensor

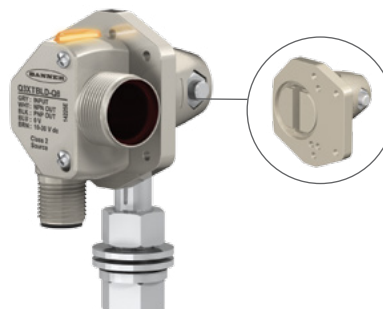


- User selectable output response time from 250 microseconds to 5 milliseconds
- Rated to IP67, IP68 and IP69K
- UL pending and CE approved
- Patent pending

Family	Housing Style	Output	Mode	Connector
Q3X	T	B	LD	Q8
	T = 18 mm Threaded Barrel	B = Bipolar	LD = Laser Diffuse	Q8 = 5-pin Integral QD <i>QD models require mating cordset</i>

Order Now

Accessories



SMBQ4XFA
includes 3/8" bolt for mounting

SMBQ4XFAM10
includes 10 mm bolt for mounting

SMBQ4XFAM12
clamps directly onto industry standard bracket systems of 1/2" or 12 mm rods

5-Pin M12/ Euro-Style Cordsets
Straight connector models listed; for right-angle, add RA to the end of the model number (example, **MQDC1-506RA**)



MQDC1-506
2 m (6.5')
MQDC1-515
5 m (15')
MQDC1-530
9 m (30')

5-Pin M12/ Euro-Style Washdown Cordset
Straight connector models only



MQDC-WDSS-0506
2 m (6.5')
MQDC-WDSS-0515
5 m (15')
MQDC-WDSS-0530
9 m (30')



Q3X Laser
Contrast Sensor

Link to
data sheets

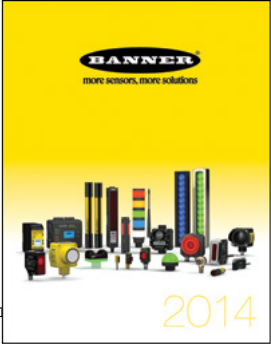
WORLD-BEAM® Q12 Series Sensors

Mixable self-contained photoelectric sensors in universal housing

- Bright, visible red (640 nm) light source
- Standard models available with 4, 6, 8, 10 or 15 m (15, 18, 21 or 30 ft) cables or 3 or 4 wire
- 100 mm (4 in) cable with Plug-in M8 threaded connector
- Solid state, bipolar output: one current sourcing (PNP) and one current sinking (NPN) available on 4-wire models
- Single output solid state PNP or NPN standard on Q12 models
- Light Output: 0.25 or 0.4mW (max) (0.25), depending on model
- Housings available with PFA chemical-resistant jacket (200 psi maximum rated) for use in harsh environments (see Chemical-Resistant Models on page 1)
- Compact 5 mm (0.2 in) housing mounts almost anywhere
- Available explosion-proof for applications with multiple sensors
- LED status indicators for Power On, Output Overload, Signal Received, and Marginal Signal
- Housings with black housing are available

Standard Model **Chemical-Resistant Model**

WARNING: Not To Be Used for Personnel Protection
Never use this device as a sensing device for personnel protection. Doing so could lead to injury or death. This device does not include the self-checking redundant circuitry necessary for use in personnel safety applications. A sensor failure or malfunction can cause either an unwanted sensor output condition.



Link to
catalog

Link to the
Banner website

World-Beam Q12

Proven Sensing Capabilities

Banner Engineering, Worldwide leader in process automation and industrial automation

Product Capabilities

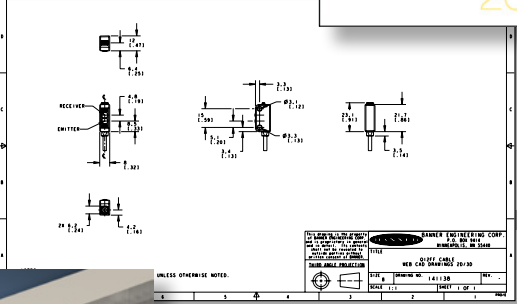
Standard Product Information

2014 Product Catalog

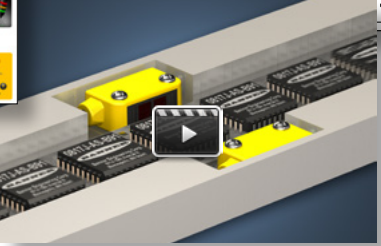
Chemical-Resistant Models

Sensing Mode	Model	Range	
4-Wire, Visible Red	Q12BCR	1.5 m (4.9 ft)	
3-Wire, Visible Red	Q12ABSCR		
	Q12ABSCR		
4-Wire, Visible Red	Q12ABFFBCR	13 mm (0.5 in) cordless	
3-Wire, Visible Red	Q12ABFFBCR		
	Q12ABFFBCR		8 mm (0.3 in) cordless
4-Wire, Visible Red	Q12ABFFBCR		20 mm (0.8 in) cordless
	Q12ABFFBCR		14 mm (0.6 in) cordless
4-Wire, Visible Red	Q12ABFFBCR		40 mm (1.6 in) cordless
	Q12ABFFBCR	14 mm (0.6 in) cordless	

Performance based on use of 90% reflectance white test card.



Link to
CAD files



Link to videos



Talk with an app engineer. Get product specs. Order now.
1-888-373-6767 • bannerengineering.com
minneapolis, mn

