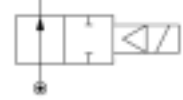


## General information

Lucifer ref.: 322K4306  
 Global ref.: 7322KBG3TVW0  
 Housing ref.: 2995  
 Coil ref.: 481865  
 Protection class: -  
 Assembly wt. (g): 490

Body: Brass body  
 Seat disc: FKM  
 Ways notation: 2/2  
 Valve function: Normally open  
 Valve actuation: Pilot operated  
 Mounting: Pipe mounting



## Specifications

### Connection / Orifice

Port size (inches): 3/8  
 Nom. dia. (mm): 12  
 Orifice EXH. (mm): -

### Flow factors

Qn (L/min): 3050  
 Qn EXH. (L/min): -  
 C (dm<sup>3</sup>/s bar): 10.8  
 Kv (L/min): 45  
 Kv EXH. (L/min): -  
 Qmax (L/min): 45

### Temperature values (°C)

#### a. Fluid temperatures

	Min.	Max.
With air:	-10	100
With water:	0	100
With steam:	-	-
With oil:	-10	100

### Pressure values (Bar)

Min. pressure: 0.30  
 Max. press. (DC): 12.00  
 Max. press. (AC): 12.00

### Power values (W)

Power DC: 9  
 Power AC: 8

#### b. Ambient temperatures

Minimum: -10  
 Maximum: 50

**Dimension drawing**

	A	B	C	D	E	F	G	H	I	J	Dia.
	inch	mm	mm	mm	mm	mm	mm	mm	mm	mm	mm
<b>K41</b>	1/4	25	50	6.2	29	27	5.5	93.5	39	73.5	40
<b>K43</b>	3/8	25	50	6.2	29	27	5.5	93.5	39	73.5	40
<b>K45</b>	1/2	27.5	55	6.2	29	27	5.5	93.5	39	73.5	40
<b>K46</b>	3/4	40	80	9	36.5	32	8	109	46	81	56
<b>K47</b>	1	42.5	85	14.2	36.5	41	8	109	56	81	56