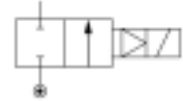


### General information

Lucifer ref.: 321K31  
 Global ref.: -  
 Housing ref.: 8993  
 Coil ref.: 488980  
 Protection class: -  
 Assembly wt. (g): 380

Body: Brass body  
 Seat disc: NBR  
 Ways notation: 2/2  
 Valve function: Normally closed  
 Valve actuation: Pilot operated  
 Mounting: Pipe mounting



### Specifications

#### Connection / Orifice

Port size (inches): 1/4  
 Nom. dia. (mm): 12  
 Orifice EXH. (mm): -

#### Flow factors

Qn (L/min): 2150  
 Qn EXH. (L/min): -  
 C (dm<sup>3</sup>/s bar): 7.6  
 Kv (L/min): 30  
 Kv EXH. (L/min): -  
 Qmax (L/min): 30

#### Temperature values (°C)

##### a. Fluid temperatures

	Min.	Max.
With air:	-10	75
With water:	0	75
With steam:	-	-
With oil:	-10	75

#### Pressure values (Bar)

Min. pressure: 0.30  
 Max. press. (DC): 7.00  
 Max. press. (AC): 10.00

#### Power values (W)

Power DC: 2.5  
 Power AC: 2

##### b. Ambient temperatures

Minimum: -10  
 Maximum: 50

