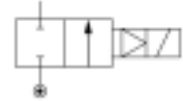


General information

Lucifer ref.: 221G25
 Global ref.: 7221GBG4VV00
 Housing ref.: 2995
 Coil ref.: 481865
 Protection class: -
 Assembly wt. (g): 630

Body: Brass body
 Seat disc: FKM
 Ways notation: 2/2
 Valve function: Normally closed
 Valve actuation: Magnalift
 Mounting: Pipe mounting



Specifications

Connection / Orifice

Port size (inches): 1/2
 Nom. dia. (mm): 15
 Orifice EXH. (mm): -

Flow factors

Qn (L/min): 4500
 Qn EXH. (L/min): -
 C (dm³/s bar): 15
 Kv (L/min): 65
 Kv EXH. (L/min): -
 Qmax (L/min): 65

Temperature values (°C)

a. Fluid temperatures

	Min.	Max.
With air:	0	100
With water:	-	-
With steam:	-	-
With oil:	0	100

Pressure values (Bar)

Min. pressure: 0.00
 Max. press. (DC): -
 Max. press. (AC): 16.00

Power values (W)

Power DC: -
 Power AC: 8

b. Ambient temperatures

Minimum: -10
 Maximum: 50

Dimension drawing

	A	B	C	D	E	F	G	H
	mm	mm	mm	mm	mm	mm	inch	mm
G15/25	75	93	37.5	15	34	27	1/2	53
G13/23	75	93	37.5	15	34	27	3/8	53
G16/26	80	95.5	40	17.5	34	32	3/4	53
G17/27	85	102.5	42.5	22.5	36	41	1	53
G21	100	108	50	23	41	41	1	70