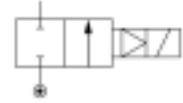


## General information

Lucifer ref.: 221G2110 Note 1  
 Global ref.: 7221GBG64NC0  
 Housing ref.: 2995  
 Coil ref.: 481865  
 Protection class: -  
 Assembly wt. (g): 1170

Body: Brass body  
 Seat disc: NBR  
 Ways notation: 2/2  
 Valve function: Normally closed  
 Valve actuation: Magnalift  
 Mounting: Pipe mounting



## Specifications

### Connection / Orifice

Port size (inches): 1  
 Nom. dia. (mm): 25  
 Orifice EXH. (mm): -

### Flow factors

Qn (L/min): 14000  
 Qn EXH. (L/min): -  
 C (dm<sup>3</sup>/s bar): 53  
 Kv (L/min): 160  
 Kv EXH. (L/min): -  
 Qmax (L/min): 160

### Temperature values (°C)

#### a. Fluid temperatures

|             | Min. | Max. |
|-------------|------|------|
| With air:   | -10  | 100  |
| With water: | 0    | 75   |
| With steam: | -    | -    |
| With oil:   | -10  | 100  |

### Pressure values (Bar)

Min. pressure: 0.00  
 Max. press. (DC): -  
 Max. press. (AC): 16.00

### Power values (W)

Power DC: -  
 Power AC: 8

#### b. Ambient temperatures

Minimum: -10  
 Maximum: 50

## Notes

- 1 4 position selector for controlled closure rate

**Dimension drawing**

|        | A   | B     | C    | D    | E  | F  | G    | H  |
|--------|-----|-------|------|------|----|----|------|----|
|        | mm  | mm    | mm   | mm   | mm | mm | inch | mm |
| G15/25 | 75  | 93    | 37.5 | 15   | 34 | 27 | 1/2  | 53 |
| G13/23 | 75  | 93    | 37.5 | 15   | 34 | 27 | 3/8  | 53 |
| G16/26 | 80  | 95.5  | 40   | 17.5 | 34 | 32 | 3/4  | 53 |
| G17/27 | 85  | 102.5 | 42.5 | 22.5 | 36 | 41 | 1    | 53 |
| G21    | 100 | 108   | 50   | 23   | 41 | 41 | 1    | 70 |