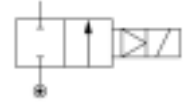


## General information

Lucifer ref.: 221G1631 Note 1  
 Global ref.: 7221GBG51NCH  
 Housing ref.: 2995  
 Coil ref.: 481865 Note 2  
 Protection class: -  
 Assembly wt. (g): 670

Body: Brass body  
 Seat disc: NBR  
 Ways notation: 2/2  
 Valve function: Normally closed  
 Valve actuation: Magnalift  
 Mounting: Pipe mounting



## Specifications

### Connection / Orifice

Port size (inches): 3/4  
 Nom. dia. (mm): 15  
 Orifice EXH. (mm): -

### Flow factors

Qn (L/min): 6000  
 Qn EXH. (L/min): -  
 C (dm<sup>3</sup>/s bar): 20  
 Kv (L/min): 80  
 Kv EXH. (L/min): -  
 Qmax (L/min): 80

### Temperature values (°C)

#### a. Fluid temperatures

	Min.	Max.
With air:	-10	100
With water:	0	75
With steam:	-	-
With oil:	-10	100

### Pressure values (Bar)

Min. pressure: 0.00  
 Max. press. (DC): 10.00  
 Max. press. (AC): -

### Power values (W)

Power DC: 9  
 Power AC: -

#### b. Ambient temperatures

Minimum: -10  
 Maximum: 50

## Notes

- 1 4 position selector for controlled closure rate

**Dimension drawing**

	A	B	C	D	E	F	G	H
	mm	mm	mm	mm	mm	mm	inch	mm
G15/25	75	93	37.5	15	34	27	1/2	53
G13/23	75	93	37.5	15	34	27	3/8	53
G16/26	80	95.5	40	17.5	34	32	3/4	53
G17/27	85	102.5	42.5	22.5	36	41	1	53
G21	100	108	50	23	41	41	1	70