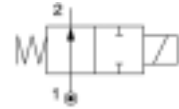


General information

Lucifer ref.: 122K8408	Body: Brass body
Global ref.: 7122KBG2GR00	Seat disc: Ruby
Housing ref.: 2995	Ways notation: 2/2
Coil ref.: 481865	Valve function: Normally open
Protection class: -	Valve actuation: Direct operated
Assembly wt. (g): 290	Mounting: Pipe mounting



Specifications

Connection / Orifice

Port size (inches): 1/4
 Nom. dia. (mm): 1.5
 Orifice EXH. (mm): -

Flow factors

Qn (L/min): 96
 Qn EXH. (L/min): -
 C (dm³/s bar): 0.29
 Kv (L/min): 1.5
 Kv EXH. (L/min): -
 Qmax (L/min): 9.5

Temperature values (°C)

a. Fluid temperatures

	Min.	Max.
With air:	-30	100
With water:	0	100
With steam:	-	-
With oil:	-30	100

Pressure values (Bar)

Min. pressure: 0.00
 Max. press. (DC): 40.00
 Max. press. (AC): 40.00

Power values (W)

Power DC: 9
 Power AC: 8

b. Ambient temperatures

Minimum: -10
 Maximum: 50

DIN 43650A
 M5x5 mm

Values in brackets for G 3/8 valves
 Valeurs entre parenthèse pour valves G 3/8
 Angaben in Klammern für G 3/8 Ventile

Dimension drawing