

View Data from the Solutions Kits on a Mobile Device or PC



The Banner Wireless Solutions Kits offer the ability to view data through a VNC server (virtual network computing) in the HMI. This allows easy connection for viewing and control of the Solutions Kit from any computing or mobile device connected to the same LAN or Wi-Fi network as the HMI. Use the following steps to set up the VNC viewing.

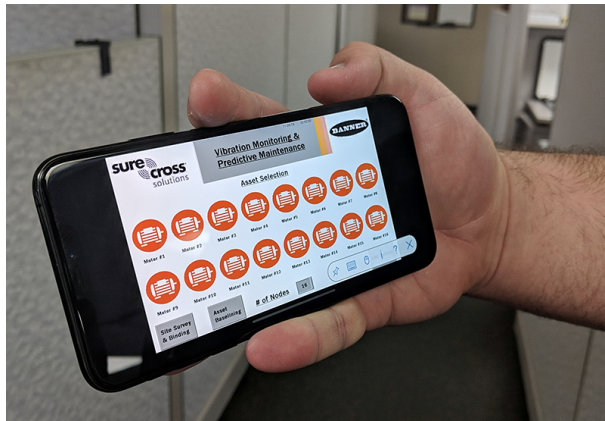


Figure 1. View the data using a mobile device

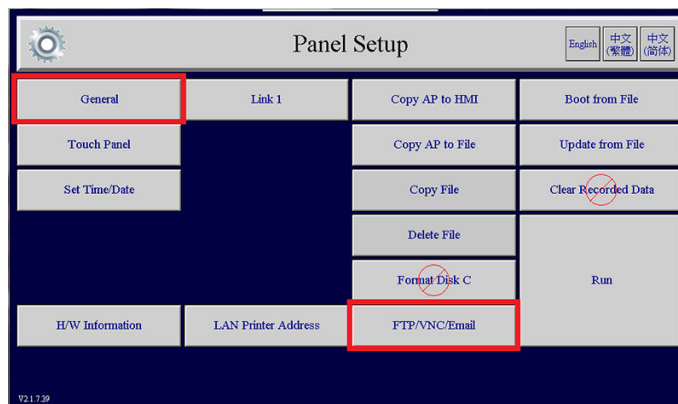


Figure 2. View the data on a PC

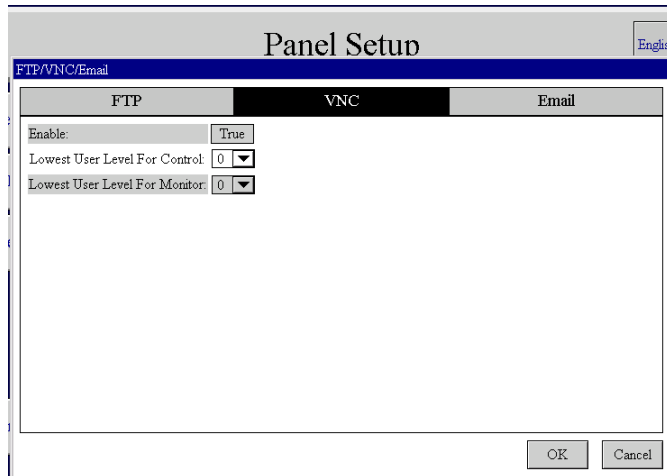
Set up the Network and VNC on the HMI

By default, the HMI and DXM are set up as static IP addresses on a simple local network with IP addresses 192.168.10.10 (HMI) and 192.168.10.1 (DXM). To change the static IP address or change them to DHCP (to automatically assign IP addresses from another network), follow the network set up information in the Quick Start Guide for the solutions kit.

1. On the HMI screen click **HMI Options > HMI System Setup**.
The **Panel Setup** screen opens.
2. Click **FTP/VNC/Email** or **FTP,VNC, Email, NTP** in the bottom right.



3. Select the **VNC** tab along the top. Select **Enable** to toggle between **false** to **true**.



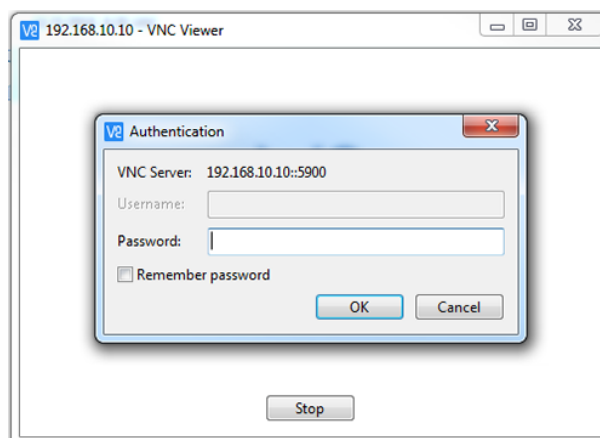
User Level	Password
0	No password
1	1
2	22
3	333
4	4444
5	55555
6	666666
7	7777777
8	88888888

4. Select **User Level** for control and for monitoring and click **OK**.
The values are 0 through 8, which dictates a different password for the VNC login. Password level 0 represents a blank password.
5. Click **General** and write down the IP address of the HMI to use with the VNC viewer program.
6. Return to the HMI's main screen by clicking the large **RUN** button in the bottom right of the **Panel Setup** screen.

Set up the VNC Program on a Mobile Device or PC

Download and install any VNC viewer program such as RealVNC for a laptop or desktop computer. There are also apps available for iOS and Android devices from RealVNC. The PC or mobile device must be on the same network as the HMI for VNC to work.

1. Open the VNC viewer program on your mobile device or PC.
2. Type in the IP address of the HMI that was retrieved in the **Network Setup** screen.



3. Enter in the appropriate password for the user level that was selected and click **OK**.
Depending on the user level used to log in, viewing or control functions will be available on your device.